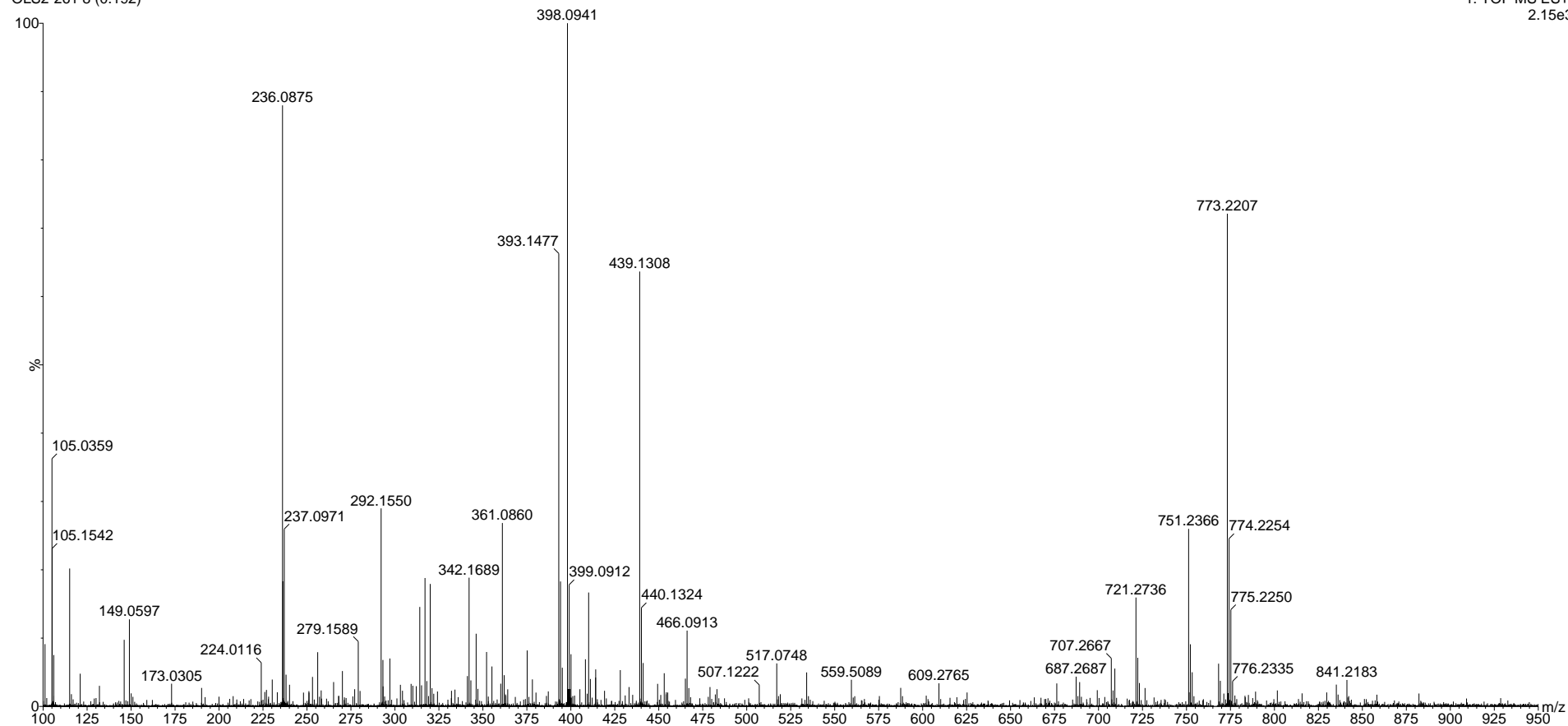


OLS2-261
OLS2-261 8 (0.192)

12-Jul-2024
1: TOF MS ES+
2.15e3



Theoretical mass for $[M+H]^+$: 376.1230

Elemental Composition Report for 393m/z

Single Mass Analysis

Tolerance = 5.0 PPM / DBE: min = -1.5, max = 100.0

Element prediction: Off

Number of isotope peaks used for i-FIT = 3

Monoisotopic Mass, Even Electron Ions

202 formula(e) evaluated with 1 results within limits (all results (up to 1000) for each mass)

Elements Used:

C: 1-30 H: 0-60 N: 1-5 O: 0-10 F: 1-1 S: 1-1

Minimum: -1.5

Maximum: 5.0 5.0 100.0

Mass	Calc. Mass	mDa	PPM	DBE	i-FIT	i-FIT (Norm)	Formula
393.1477	393.1496	-1.9	-4.8	4.5	133.6	0.0	C16 H26 N2 O6 F S [M+NH4]+

[M+Na]+ 398m/z